

Spare Parts * Specify Colour

For maintenance and repairs, we recommend you employ a Registered Plumber.

Before ordering spare parts, determine the correct reference number from the exploded diagram. Quote this number, and where appropriate, the colour of your tap. For spares, please contact your local distributor or Perrin & Rowe.

Titan or Oberon	Mimas		
	Rinse	Non-Rinse	
Rinse 9.13362	Non-Rinse 9.13363	Rinse 9.13842	Non-Rinse 9.13843

Oberon

Titan

Mimas

Rinse

Guarantee

For written details of the product guarantee, please contact us at the address shown below.

Perrin & Rowe is a registered trademark of Avilion Limited.
Gateway XIII, Ferry Lane, Rainham, Essex, RM13 9JY, United Kingdom.
T +44(0)1708 526361 F +44(0)1708 550220 E sales@avilion.co.uk W www.avilion.co.uk

Mimas	Oberon	Titan
4841	4861	4871
4843	4863	4873
4846	4866	4876
4848	4868	4878

Congratulations on the purchase of your Perrin & Rowe Kitchen Tap.

Correctly installed and with sensible care, it will give many years of trouble free service.

Before you proceed... We recommend you engage the services of a registered plumber to install this product.

Read the instructions and diagrams in this leaflet carefully.

Preparation

This range of Perrin & Rowe kitchen taps features a spout that allows hot and cold water to mix before discharge. Check valves are supplied in the inlets of all UK Contemporary taps. Rinse products are supplied with WRAS listed double check valves.

- 1) Flush the plumbing system before installing the tap.**
This is to avoid plumbing residues clogging the check valves, aerator, or possibly damaging the ceramic valves. This is especially important where extensive plumbing work has been carried out.

Check List

- Temperature of the hot water supply does not exceed 85°C.
- Recommended minimum water supply pressure - 1 bar.
- Recommended maximum water supply pressure - 5 bar.
- Ideal performance obtained with equal hot & cold pressures.

Mimas, Oberon & Titan Centrebody Assembly

- Refer to Figure 1.

- 2) Oberon and Titan Centrebody - Hot supply should be on the left when viewed from the front of the fitting.
- 3) Mimas - Lever should be on the right when viewed from the front of the fitting. Hole centre a minimum distance of 65mm from wall. The Hot supply should be at rear of the mixer.
- 4) Monobloc mixers and Titan centrebody require a 35mm diameter hole through the surface they are to be installed on. Maximum counter-top thickness 40mm.
- 5) Insert the flexible connections through the hole ensuring that the base ring and seal are in place between the mixer and mounting surface.
- 6) For Mimas and Oberon mixers on sheet metal sinks, use the sink support where provided.
- 7) From the underside of the counter-top, place the clamp plate on securing stud and using the box spanner supplied, put fixing nut in spanner and tighten until mixer is held firmly in position. **See Figure 1.**

Titan Sidevalve Assembly

- Refer to Figure 2.

- 8) The side valve assemblies require a 30mm diameter hole through the counter-top surface.
- 9) Undo and remove cover, handle, rosette, and base seal. Screw backnut and washer fully onto side valve shank.
- 10) From underside pass shank through the hole in the counter-top then place seal over shank, screw rosette with base seal onto shank until the thread can be seen above the rosette.
- 11) Ensure the connection for flexible hose is facing the nozzle and tighten backnut and fibre washer up to the underside of the counter top by hand to stop sidevalve from rotating.
- 12) Connect flexible hose from nozzle to sidevalve outlet. Screw the cover and handle onto the sidevalve ensuring that the handle is correctly aligned. If not, remove and turn the plastic vernier insert a few splines until the correct alignment has been achieved.
- 13) Unscrew the rosette until it meets the cover and fully tighten backnut and fibre washer up to underside of counter-top.
- 14) Connect the Hot & Cold water supplies to the side valve inlets.
- 15) **Important** - Check that flexible hoses are not twisted or kinked as this will restrict the flow.

Rinse Assembly - Refer to Figure 2, 3, 4.

- 20) The rinse units require a 30mm diameter hole through the surface they are to be installed on.
- 21) Assemble rinse socket to the counter-top ensuring the base seal is in place under body and the fibre seal is above the backnut.
- 22) Thread the tapered end of the rinse flex to the Rinse unit ensuring the rubber seal is in place between them.
- 23) Pass the other end of the flex down through the socket, and screw the externally threaded end to the remaining hose at the base of the tap. **See Figure 2, 3, 4.**

Before Use

- 24) Turn on the Hot and Cold supplies to the tap.
- 25) **Carefully check the installation for leaks.**
- 26) If further building work is to be carried out in the vicinity, cover the tap with a cloth or towel to avoid damaging the finish.

Figure 1. Installation of Tap

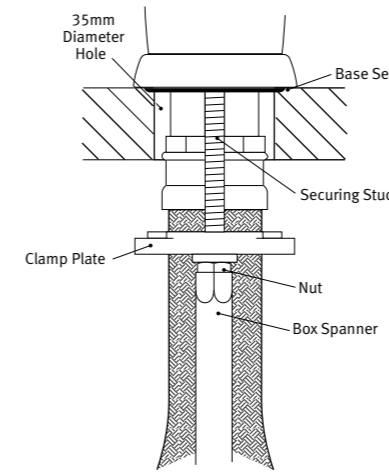


Figure 2. Installation of Titan

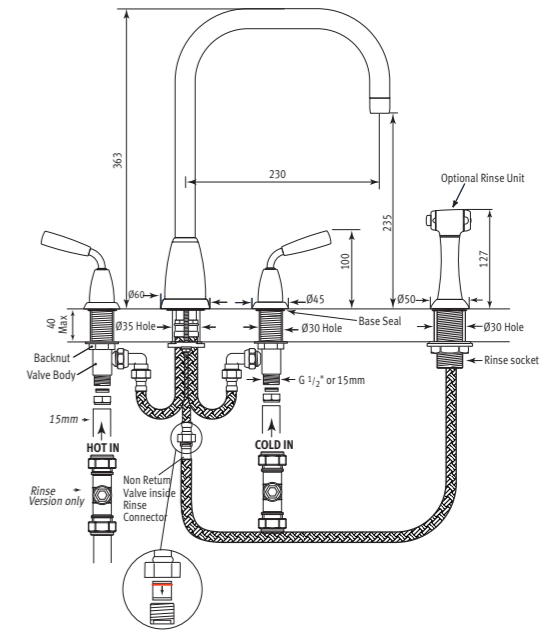


Figure 3. Installation of Mimas

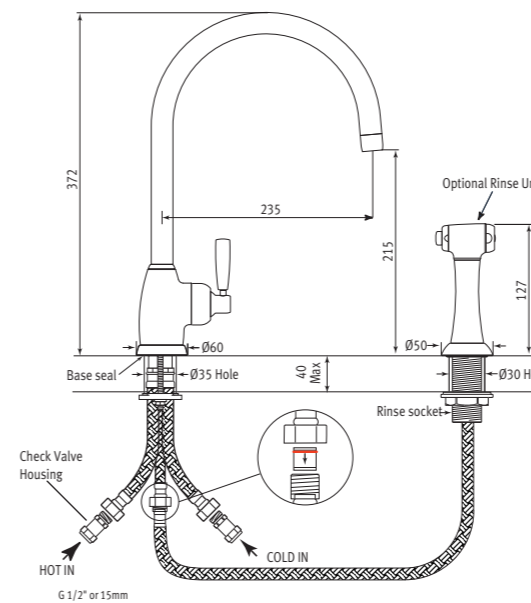
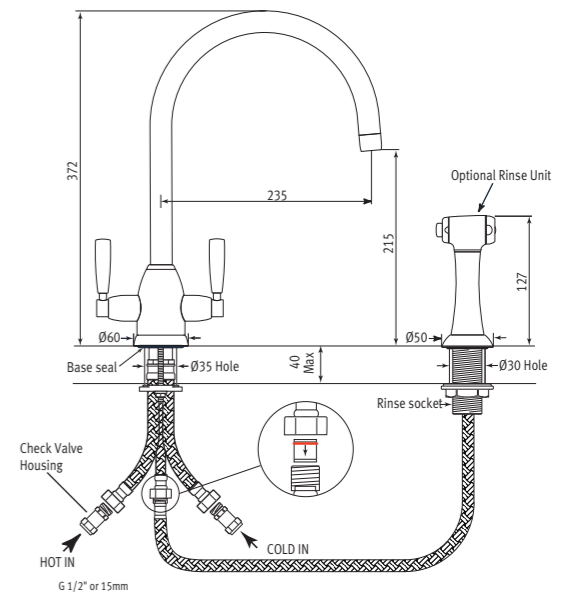


Figure 4. Installation of Oberon



Operation

Ceramic disc valves are fitted as standard. Flow from FULLY OFF to FULLY ON is achieved by rotating the handles a quarter turn.

The Mimas mixer temperature is controlled by rotating the lever forwards or backwards, in line with the body of the tap, to adjust Hot and Cold. The flow of water is increased by pushing the lever towards the body of the tap.

Care & Maintenance

Occasional cleaning with warm soapy water, followed by a polish with a soft cloth is all that is required to keep the plated finish in good condition.

Do not use proprietary abrasive liquids, powders, or pads to clean the tap. You will damage the plated finish and void your guarantee.

The aeration device fitted to the hot/cold water outlet may need occasional cleaning, especially in hard water areas. This is accomplished by unscrewing the outlet in an anti-clockwise direction, dismantling and leaving the inner screen mesh immersed overnight in vinegar or lemon juice. **DO NOT use chemical descaling liquids for this purpose.**