

Franke Filterflow Corinthian Tap

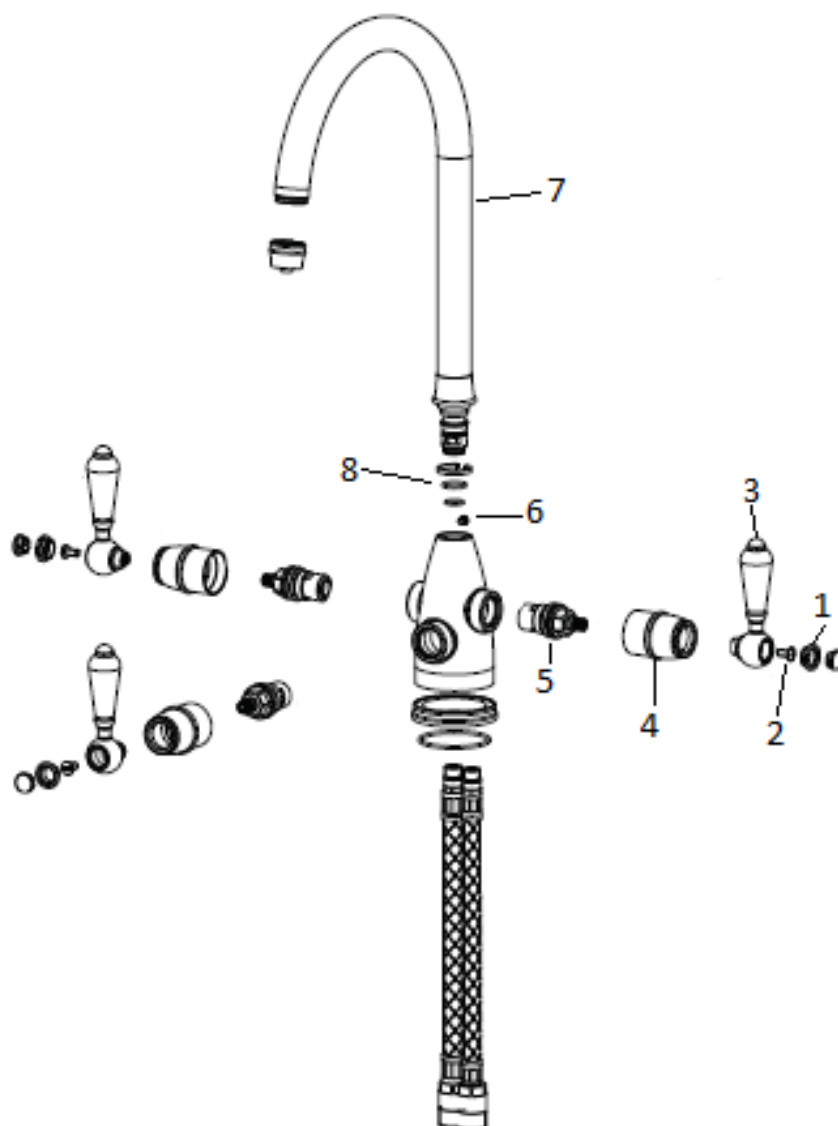
Replacing Cartridge and O-Rings

Replacing the cartridge

Before replacing the cartridge, you will need to turn the water off. You will need to unscrew the indicator (1) by unscrewing it anticlockwise. You can then unscrew the handle retaining screw (2) by using a cross head screwdriver. Once the handle (3) is removed, you can unscrew the valve cover (4) by unscrewing it anticlockwise. You will then be able to unscrew the cartridge (5) by using an adjustable spanner.

Replacing the o rings

To replace the o rings, you will need to unscrew the spout retaining screw (6) by using a 2.5mm allen key. You will then be able to lift the spout (7) up and remove the existing o rings (8) and then replace with the new parts.



Central Services Ltd
Unit 17 Park Hall Business Village
Park Hall Road
Stoke-on-Trent
ST3 5XA

01782 599258
ks-ukcentralservices.gb@franke.com

*Make
it
Wonderful*

FRANKE