

# Franke Filterflow Doric Tap

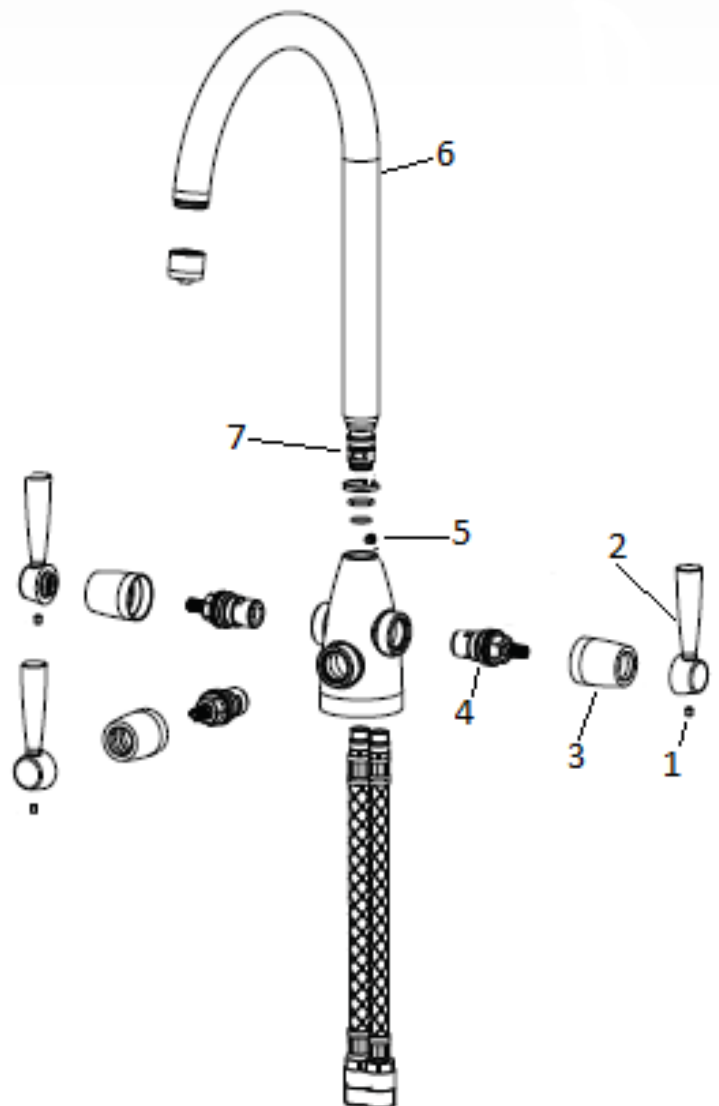
## Replacing Cartridge and O-Rings

### Replacing the cartridge

Before replacing the cartridge, you will need to turn the water off. You will need to unscrew the handle retaining screw (1) by using a 2mm allen key. You will then be able to remove the handle (2) and then unscrew the valve cover (3) by unscrewing it anticlockwise. You can then use an adjustable spanner to remove the existing valve (4) and replace with the new part.

### Replacing the o rings

To replace the o rings, you will need to unscrew the spout retaining screw (5) by using a 2.5mm allen key. You will then be able to lift the spout (6) up and remove the existing o rings (7) and then replace with the new parts.



Central Services Ltd  
Unit 17 Park Hall Business Village  
Park Hall Road  
Stoke-on-Trent  
ST3 5XA

01782 599258  
[ks-ukcentralservices.gb@franke.com](mailto:ks-ukcentralservices.gb@franke.com)

*Make  
it  
Wonderful*

**FRANKE**